

All About Tournament



Tournament Affidavit

- **Eligibility Affidavit** - The document itself, filled out with all signatures.
- **League Boundary map** - Must accompany affidavit with locations of all the players, signed and dated by the League President and District Administrator. Please print the map from the Data Center.
- **Tournament Verification Form** - for each player; NOTE: Players who established “residence” or “school attendance” for regular season and/or tournament in a prior season using Player Verification Form, and can produce the form with proper proofs and signatures, will NOT need to complete a new Player Verification Form.

Tournament Affidavit

- **Three or more documents to determine residency** One proof from each of the three different groups to determine residency of the parent(s) or legal guardian (court appointed) **or a School Enrollment Form** for each player named on the tournament affidavit.
- **Waivers** If applicable, a player's regular season waiver needs to be included. (i.e. II(d), IV(h), Charter Committee)
- Should include: **Medical Release forms and Model Release forms**

Birth Certificates

Birth Certificates :

Verified by the League President and District Administrator. Neither the original or a copy of the Birth Certificate is needed for the affidavit. Please hand back to the parent after verification.

Residency Documents

- Residence shall be established and supported by documents containing the full residence which includes parent(s) or guardian(s) name, street address, city, state and zip code information, dated or in force between February 1, 2018 (previous year) and February 1, 2019 (current year).

Residency Documents



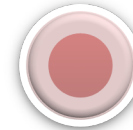
Group One

1. Driver's License
2. School records
3. Vehicle records (i.e., registration, lease, etc.)
4. Employment records
5. Insurance documents



Group Two

1. Welfare/child care records
2. Federal records (i.e., Federal Tax, Social Security, etc.)
3. State records
4. Local (municipal) records
5. Support payment records
6. Homeowner or tenant records
7. Military records



Group Three

1. Voter's Registration
2. Utility bills (i.e., gas, electric, water/sewer, phone, mobile phone, heating, waste disposal)
3. Financial Records (loan, credit, investments, etc.)
4. Medical records
5. Internet, cable, or satellite records



School Documents

School attendance shall be established and supported by a document indicating enrollment for the current academic year, dated prior to October 1, 2018, and with the physical location of the school

1. Official/Certified School enrollment record dated prior to October 1, 2018

2. A Little League-issued school attendance form completed by the principal, assistant principal, or administrator authorized to sign on behalf of the school

Affidavit Review

- District Administrator must review affidavit and all supporting documents prior to start of play for each tournament team.
- District Administrator is permitted to use district officials to assist in the review.
- DA or designee initial in District Approved box for each player.



Affidavit Security

- No unauthorized individual may view the document or player documentation.
- No opposing team, including league officials, may request to view any part of the document or corresponding documentation.
- The affidavit, when submitted by team manager for each game, shall be stored in a safe and secure location..
 - Attempt to reduce eyes exposed to document.
 - Best-case scenario is to provide player ages to the scorer for anyone who is pitching.



League Eligibility

- All of the following must be submitted and approved prior to **June 1...**
 - Waiver requests regarding player, manager, coach, team or league eligibility.
 - Combined team and interleague play applications that may involve tournament play.
- All outstanding fees or balances must be paid by June 1.
- Tournament Team enrollment must be completed by June 15.



Hosting a tournament

- How many volunteer will you need?
- How many volunteer umpires will be assigned to each game? (should be at least two in each game)
- What fields will you use, have they been included on an ASAP plan?
- Did you build in extra days to accommodate weather?
- What tournament format are you using?
- How are you communicating with the leagues?

Hosting a tournament

- What expenses will you incur?
- Will you charge a fee for admission? (intermediate and above only)
- Have brackets from state play been approved by Regional office? (all brackets completed by June 15, or two weeks prior to start of tournament.)
- Will there be addition activities for teams?
- Will there be discounted hotels or accommodations for teams?

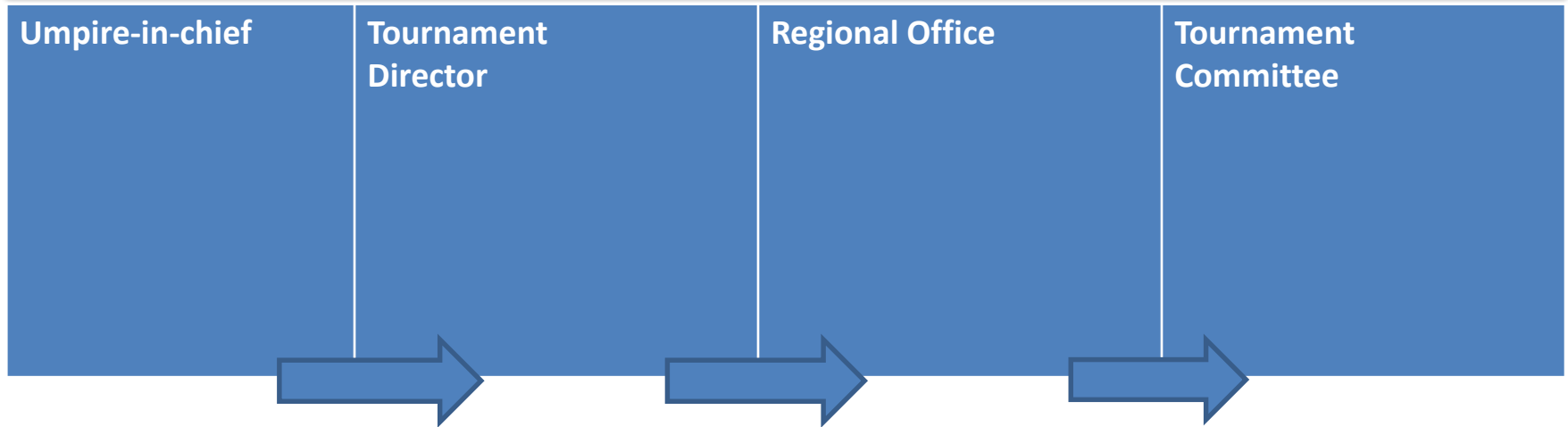
Tournament Cost

- Tournament hosts are responsible for covering all costs associated with the tournament including, but not limited to, game balls, pins, banners, awards, field maintenance, umpire-related expenses, etc....

Responsibility

- Once the Tournament season starts, authority is vested solely in the Tournament Committee in Williamsport.
- There will be no waivers or resorting to local rules or other variations unless granted explicitly from the Tournament Committee in Williamsport.
- Revocation of tournament privileges or forfeiture of a tournament game may be decided only by the Tournament Committee in Williamsport.

Tournament Chain of Command



- Issues must be resolved in a timely manner and properly follow chain-of-command.



Tournament protests

- Each manager has the right and ability to make a protest...
 - *Violation of Interpretation of the Playing Rule*
 - *Use of Ineligible Pitcher*
 - *Use of Ineligible Player*
 - *Violation of Mandatory Play*
- The manager making the protest has the right to take the protest to the authority (Tournament Committee).
- Decision of the Tournament Committee is final and binding.

Protest Example:

When a manager claims that a decision is in violation of the playing rules, the following steps must be followed:

1. Formal verbal protest must be made to Umpire-in-Chief before next pitch or play.
2. Umpire-in-chief to call conference with umpires.
3. If unresolved, must consult with Tournament Director or District Administrator.
4. If still unresolved, a call must be made to Regional Director.
5. Regional Director must call the Tournament Committee for a decision.
6. The decision of the Tournament Committee shall be final and binding.

Tournament Mileage

- League is reimbursed (\$1 per mile) for travel to Section Tournament levels and beyond (credited toward the next year's regular-season fees).
- For teams traveling 150 miles or more.
- Maximum of one round trip per tournament.
- Reimbursement is NOT for individual cars or parents.
- Submission deadline is September 15th of the current year.

Regional Tournament Dates:

Regional Baseball Tournaments:

LLB	August 4-10: San Bernardino, Regional Facility
Intermediate:	July 17-25, Nogales, AZ-8
Junior:	July 26- August 3, San Jose, CA-12
Senior:	July 18-24, Sacramento, CA-5

Regional Softball Tournaments:

LLS:	July 20-25 or (26): San Bernardino, Regional Facility
Junior:	July 17-25: Tucson, AZ-5
Senior:	July 18-23: Missoula, MT-2

Pop Quiz!

Question 1

- Tournament Directors are fully responsible for providing Little League volunteer umpires for tournament play?
- True or False?

Question 1 - Answer

- Tournament Directors are fully responsible for providing Little League volunteer umpires for tournament play?

True

Question 2

- If a player participates in the Intermediate division during regular season, does that player qualify for both the Intermediate and Little League divisions in tournament, provided he/she participates in 60% of the regular season games ?
- Yes or No?

Question 2 - Answer

- If a player participates in the Intermediate division during regular season, does that player qualify for both the Intermediate and Little League divisions tournament, provided he/she participates in 60% of the regular season games?

Yes

Question 3

- Can a Tournament Director discipline a manager if there is a Mandatory Play Violation, provided he/she is in agreement with the Scorekeeper and Umpire-in-Chief?
- Yes or No?

Question 3 - Answer

- Can a Tournament Director discipline a manager if there is a Mandatory Play Violation, provided they are in agreement with the Scorekeeper and Umpire-in-Chief?

No

Answer:

- Mandatory Play ruling can only be made by the Williamsport Tournament Committee, through the protest line. Any potential removal must be presented to the Tournament Committee

Question 4

- Scenario: Player 'A' enters the batter's box. After two pitches, it is discovered the bat does not meet USA Baseball bat standards. The batter is declared out and nobody is ejected.
- True or False?

Question 4 - Answer

- Player 'A' enters the batter's box. After two pitches, it is discovered the bat does not meet USA Baseball bat standards. The batter is declared out and nobody is ejected.

False

- Answer:

Batter is declared out and batter and manager are ejected.

Question 5

- Tryouts for tournament team selection can take place before June 1st with Regional approval?
- True or False?

Question 5 - Answer

- Tryouts for tournament team selection can take place before June 1st with Regional approval?

False

- June 1 and no sooner.

Question 6

- If an ineligible player is discovered prior to the start of a game, can a Tournament Director remove that player from the team automatically?

- True or False?

Question 6 - Answer

- If an ineligible player is discovered prior to the start of a game, can the Tournament Director remove that players from the team automatically?

False

Answer:

District Administrator must report to the Regional Office through protest list, who will review with the Williamsport Tournament Committee

Question 7

- The League President may be eligible for selection by the local league Board of Directors to coach or manage with written approval from his/her respective District Administrator?
- True or False?

Question 7-answer

- The League President may be eligible for selection by the local league Board of Directors to coach or manage with written approval from his/her respective District Administrator?

True

Have a great Tournament Season!

The End

