



# Parent's Guide



### **Dear Little League® Family Members and Fans:**

On behalf of Little League® International, thank you for the dedication you have shown to your hometown team. Reaching the Little League Baseball® World Series is a tremendous accomplishment, and all players, family members, and fans should be proud of this achievement.

For more than 80 years, Little League has been a positive, community-driven activity across the globe. We are excited to welcome you to the place where it all began in 1939. For more than 9,750 children who have participated in the Little League Baseball World Series in the past 74 years, playing baseball in Williamsport has been one of the most memorable times in their young lives.

No matter how the teams fare at the World Series, they are all champions. More than 12,000 tournament games have been played in all 50 U.S. states leading up to this point. Only 16 Little League Baseball teams from among more than 4,500 are still playing in the International Tournament. Your hometown squad is one of those 16 very fortunate teams.

For seven decades, we have learned the best ways to help make sure this experience is safe, comfortable, and fun for every team. If you are a parent of a World Series player, you are an important part of ensuring your child's experience is a good one, which is why we have developed this information for you, your family, and the fans of your team. Please take time to review the information, and make sure you bring it with you to Williamsport, if you make the trip. If you are not able to come to Williamsport, please review the materials anyway, so we can help put your mind at ease regarding your child's stay at Little League International.

For all parents and guardians, we will be holding a virtual Parents Briefing Meeting, with more information being shared with you about those details.

Thanks again, and congratulations!

Sincerely,

**Patrick W. Wilson**

Senior Vice President, Chief Program Operations Officer  
International Tournament Director



**539 US Highway 15, P.O. Box 3485  
Williamsport, PA 17701-0485**

**Phone 570-326-1921**

**LittleLeague.org**

© 2021 Little League Baseball, Incorporated. All Rights Reserved.

*little league*



Scan QR code to register



Visit for activities, exclusive content, and the chance to

win great prizes

Register Online at LittleLeague.org/FanZone

NO PURCHASE NECESSARY TO ENTER OR WIN. Ends 8/29/21. Must be a legal resident of the 50 U.S. or DC, 18+. Void where prohibited. For Official Rules, visit LittleLeague.org/FanZone

## WELCOME

Welcome to the 2021 Little League Baseball® World Series! Along with the information provided to you in this document, additional information about lodging, ticketing, game schedules, and much more is available at [LittleLeague.org](http://LittleLeague.org).

## MEET THE TEAM HOSTS

Your best source of information regarding anything related to the World Series are the Team Hosts. These are 40 individuals who volunteer their time to act as ambassadors of goodwill for Little League® International.

Team Hosts assume many responsibilities, from arranging uniform fittings to helping in the coordination of the many media activities involving the teams. These volunteers spend every day of the World Series with the teams, from breakfast until well into the night, providing guidance and assistance to the players, coaches, and managers.

These Team Hosts are so fondly remembered by the players that they often maintain contact for many years after the players have gone back home. Some of the Hosts have been performing this vital service at the Little League Baseball World Series for more than four decades.

This makes the Hosts your best source for information. If you have any questions or concerns, please feel free to bring them to the attention of a Team Hosts. If they don't have the answer, they will come to one of us, the Staff at Little League, who will get the answer for you.

A list of Team Hosts and their years of service, is available at: [LittleLeague.org/TeamHosts](http://LittleLeague.org/TeamHosts).

## TEAM TRAVEL

Little League will secure, or otherwise, arrange for travel to and from the Little League Baseball World Series for all the teams. Whether arrangements are being made by Little League Baseball or not, the Region Director will provide your team manager with travel arrangement information at, or near, the end of the Region Tournament.

Each team will depart the Little League Baseball World Series after the team is eliminated. The four teams participating in the games during Championship Weekend will depart on Monday, August 30. When a team departs the Little League Baseball World Series, it must do so as a complete team because: 1) The travel arrangements are secured as a group, and; 2) the team must remain intact while staying at the Little League International Complex. We cannot arrange for teams to depart in multiple groups.

There are times when travel to a team's home city at a requested departure time is not possible. If a request cannot be fulfilled, Little League will make its best efforts to return the team as close as possible to the team's home city.

All travel arrangements will be coordinated through the team managers. It is critical that the manager communicates this information to the team and the players' parents or guardians.

## LITTLE LEAGUE® STADIUMS

A team's initial arrival at the International Complex is always a magic moment. The stadiums at which all World Series games are played are decked out with brilliant green Kentucky bluegrass, bright orange clay, and colorful bunting. To anyone who has seen the Little League Baseball World Series in person, it is not surprising that Howard J. Lamade Stadium (the largest and oldest of the two) was named by *Sports Illustrated* as one of the top 20 places in the world to see a sporting event.

Lamade Stadium, with a capacity of 45,000 (including the terraced hills beyond the outfield fence), is nestled into the side of Bald Eagle Mountain, which is part of the Nittany Mountains, a portion of the Appalachian Mountains that extend from Georgia to Maine. From the hill above the stadium, where the players get their first glimpse of the field, it is an awesome sight.

Little League Volunteer Stadium was completed in 2001 and allows Little League to accommodate the 16-team field. Both stadiums are on the Little League International Complex. The secure team housing and dining facilities (Dr. Creighton J. Hale International Grove) are also located at the Little League International Complex.



## FAMILY TRAVEL

Because Williamsport is a relatively small area, flights to and from the closest airport, Williamsport/Lycoming Regional Airport (IPT), are limited. The Williamsport/Lycoming Airport is located in Montoursville, which is about four miles from the Little League International Complex.

Other airports with regular scheduled flights in close proximity are in State College, Pa. (SCE - 55 miles); Elmira, N.Y. (ELM - 70 miles); Scranton/Wilkes-Barre (AVP - 70 miles); Harrisburg (MDT - 75 miles); Baltimore Washington (BWI - 175 miles); Philadelphia (PHL - 184 miles); and Newark (EWR - 185 miles). The nearest large international airports are Philadelphia, Baltimore/Washington, and Newark.

If you plan to drive to Williamsport: The Little League International Complex is located on U.S. Route 15 (18 miles north of Exit 210 to Interstate 80), a major north/south artery of central Pennsylvania, in South Williamsport.

Free parking during games is available near the stadiums via Mountain Avenue. Fans are asked to refrain from parking on side streets and use the lots designated for parking. You are also encouraged to park in downtown Williamsport and use the frequent shuttle buses to the stadiums.

- Computer-based (GPS) address to public parking is 570 East Central Avenue, South Williamsport, PA.
- Keep in mind, there are specific public entry points that must be used when entering the complex.
- Additional information about visiting the complex can be found at [LittleLeague.org/Visit](http://LittleLeague.org/Visit).

## PLAYER ACCOMMODATIONS

All accommodations for the players, managers, and coaches of World Series teams will be the responsibility of Little League International, with no charge for these services to you or your local league. Without exception, all players, managers, and coaches will reside at Dr. Creighton J. Hale International Grove, which is part of the Little League International Complex. The "Grove" is a restricted area, which means no parents/fans will be permitted inside the Grove during the teams' stay.

However, at no time will any player be permitted to leave the Little League International Complex without the direct permission of the Tournament Director (Patrick Wilson, Little League Senior Vice President and Chief Program Operations Officer), the Senior Assistant Tournament Directors (Daniel Velte, Little League Senior Director of League Development and Regional Operations; Nick Caringi, Senior Director of Operations and Education), or the Assistant Tournament Director (Sam Ranck, Little League Director of League Development). This is for the safety of the players, and those violating these guidelines may be sent home from the Little League Baseball World Series.

The dormitories are spacious with comfortable bunk beds. Players, managers, and coaches are expected to display good conduct, good manners, and good sportsmanship at all times, on the field and off, and are expected to maintain their dorms in good condition. Misconduct in the dorms, in the dining hall, on the field, etc., could result in the manager, coach, player, or entire team being disqualified from further participation in the Little League Baseball World Series, by action of the Tournament Committee. Two TVs are available in each dorm and the dorms are outfitted with Wi-Fi. Players, managers, and coaches may bring personal audio/video devices. Videos or games deemed to be inappropriate by Little League staff will be returned to the parent(s).

### Taking video or photos is prohibited in the dorms on any device.

The players' laundry will be taken care of, including personal items, by Little League International staff.

Meals for players, managers, and coaches are provided by Little League at the Dining Hall inside the International Grove. The meals are prepared by a professional

staff, and are designed to be nutritious and pleasing to children of this age. If your child has any specific needs (medical or religious) regarding food, please make sure that is outlined in the Portal documentation and that your team manager knows as soon as possible to communicated to the appropriate individuals. We will make every reasonable effort to accommodate you.

Little League International knows how important families are to the Little League Baseball World Series experience. Parents and families, however, are strongly encouraged to not interact with individual players or the team pod during the tournaments. Families will have limited opportunities to interact with their players outside of virtual opportunities. Little League International will do everything in its power to provide opportunities to virtually connect players with their families, as well as support the emotional and mental wellbeing of all players, parents, and family members with professional support from mental health services and professionals.



## LODGING IN THE WILLIAMSPORT/ NORTH CENTRAL PENNSYLVANIA AREA

The population of Williamsport and small nearby communities is only about 50,000. With 40,000 or more visitors during the week of the Little League Baseball World Series, hotel space is at a premium. We regret that Little League cannot reserve rooms for the parents, family members, news media, or other parties.

Many rooms at hotels nearest Little League International are booked far in advance of the World Series. However, cancellations do occur, and you may want to try for something closer before settling on a room outside the immediate area. You may also wish to call the Williamsport/Lycoming Visitors Center first. The downtown Visitors Center may have information on nearby hotels and motels with available rooms. For information about the area visit, [LittleLeague.org](http://LittleLeague.org) or the Visitors' Center can be reached during business hours at 570-327-7700 or [VacationPA.com](http://VacationPA.com). Members of the Lycoming City Visitors Bureau will also be on hand each day in the Visitor's Information Booth, located behind Volunteer Stadium.



## DECORUM

The actions of all players, managers, coaches, umpires, family members, fans, volunteers, and Little League International Staff Members are expected to be above reproach. The eyes of the world are on Williamsport during the Little League Baseball World Series. Above all, win or lose, good sportsmanship is to be exhibited at all times. Misconduct, whether in the dorms, in the dining hall, on the field, etc., could result in the manager, coach, player, or entire team being disqualified from further participation in the Little League Baseball World Series, by action of the Tournament Committee.

The umpires invited from around the world to work the games are volunteers. Although the umpires have been through a rigorous selection process, and have been chosen for their proficiency and experience, they are fallible.

Little League International promotes and expects good sportsmanship from its players, coaches, volunteers, and spectators. We request your cooperation by supporting the participants and officials in a positive manner. Profanity, disparaging comments of any kind, or other intimidating actions taken by spectators, players, coaches, or volunteers that are deemed inappropriate by the Little League International Tournament Committee will not be tolerated and may jeopardize the eligibility of the participating teams within the Little League International Tournament.

## FUNDRAISING

Leagues are often asked to assist with the expenses of travel for parents and families. While these individual expenses can be daunting for some parents, leagues are encouraged to focus on the fundraising specifically for the expenses of the league and not for individuals. The league may however, choose to outline specific expenditures that it will help offset for parents and families, such as bus rentals, travel vouchers, and catered meals, in addition to travel expenses for the players and coaches. As a reminder, Little League International takes care of all travel costs and meals for the players and the three coaches listed on the affidavit.

Generally, the league should be careful in its promotion and support of fundraising for a group of individuals and be as transparent as possible when communicating to the public.

Should a league be asked by families of the participants to permit fundraising, a few guidelines should be considered:

- The fundraising campaign must be set up and operated separately from the league. The efforts should refrain from using Little League trademarks which are solely reserved for chartered league use so as not to appear as fundraising for the local league.
- The fundraising campaign and all associated promotion should clearly spell out that the organization is not a non-profit and therefore the donations are not tax deductible.
- The campaign should also specifically explain how the money will be used and divided and note that it is not being used for the league reimbursement but for parental reimbursement, essentially explaining that it will go back to individuals.
- Any payments from the fundraising campaign back to the individuals that are \$600 or more are considered taxable.
- Promotion of corporate entities / businesses is prohibited.

Your local Little League program should not be exploited or commercialized in any way nor can you give permission to use your league or team name, which contains Little League trademarks, in commercial advertisements or endeavors including social media. More fundraising information can be found at [LittleLeagueUniversity.org](http://LittleLeagueUniversity.org) (see fundraising for tournaments and commercialization).

## COMPLEX SECURITY AND SAFETY

In keeping with Little League's policy of setting a good example, tobacco of any kind, including e-cigarettes and chewing tobacco, medical marijuana, and alcohol use of any kind is prohibited in all areas of the complex.

Coolers, large tarps, tents, and large bags are not permitted on the complex, and all items are subject to inspection. Cans and bottles are not permitted in the stadiums. Items containing liquids cannot be brought onto the complex. Items specifically for infants, as well as non-aerosol sunscreen in its original container, are permitted. Aerosol containers of sunscreen are NOT permitted. All items brought to the complex are subject to inspection.

**Note:** Empty plastic containers may be brought onto the complex.

When you enter the complex, you will notice a higher level of security than you may be accustomed to, which will include metal detection devices and searches of bags. Please plan to arrive early, as some minor delays may be expected.

Banners and signs must not be attached to the stadiums (poles, fences, screens, etc.) or on the hills in any way. If used, banners must be held by the individuals and may not be free-standing. Signs and banners must be no larger than 3' x 5', may not obstruct the view of any spectator, and must be in good taste. Flag poles, sticks, and/or staffs are also prohibited. Little League International is the sole authority in this regard.

The Little League International Complex is private property. Little League reserves the right to remove any sign or banner that it deems offensive or inappropriate.

Noisemakers of any type are **not permitted** on the complex, as well as any other items used to distract, confuse, or "rattle" the players. Booing, taunting, or otherwise cheering against an opposing team will not be tolerated. Little League International is the sole authority in this regard.

Anyone found to be using a "laser" type pointer will be removed from the premises.

Little League reserves the right to remove any person(s) who causes a disturbance of any kind, or whose actions or clothing are considered inappropriate. Those demonstrating without written permission from Little League International may be removed from the premises.

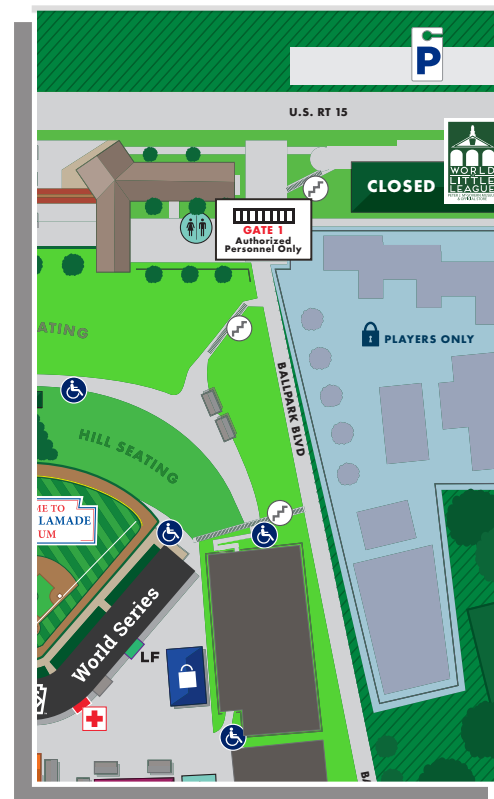
Distribution of literature, banners, posters, placards, fan cards that include any type of commercial promotion or logo, or any other item, without written permission from Little League International, is prohibited. Bulk items may not be delivered to player for distribution.

Solicitation on the Little League property is not permitted. Offenders will be promptly removed from the property and may be denied re-entry. No items of a commercial nature should be brought onsite with the intent to distribute. Such items may be confiscated. Little League reserves the right to remove from or deny access to Little League property any item, individual, or group whose actions are deemed inappropriate. If anyone approaches you about selling a product or service, and you believe they may not have permission from Little League International, please, let us know.



After games, the teams will be transported by passenger vans from the stadium to the International Grove. Teams typically will go into their dorms first for post-game talks, showers, etc.

Those on the Little League International Complex, in the stadiums, or on the hillsides who do not follow these simple rules are liable to be removed from the premises. If you see anyone violating any of these policies, please bring it to the attention of any security personnel or usher.



## MEDIA

More than 100 media outlets (newspapers, radio stations, television stations, etc.) cover the Little League Baseball World Series each year, many covering virtually this year. All of the games this year will be televised throughout the United States and other nations on the ESPN family of networks or ABC and the ESPN app. In addition, WRAK 1400-AM, 95.5-FM, and 102.7-FM will be broadcasting all World Series games as the flagship radio station of the Little League Baseball World Series. All English-speaking radio broadcasts of game coverage will originate from Williamsport's iHeartRadio (WRAK/95.5/102.7).

Daily reports, video highlights, and game recaps will be posted on LittleLeague.org. Please remember that millions of people will be watching your actions as fans and family members, and the actions of the teams.

We endeavor to maintain a healthy balance here at the Little League Baseball World Series with regard to the media. Even though the players are children, when they are on the field, their actions are a matter of public record. As a result, their photos and likenesses will appear in various forms of media during the tournament and in the future.

With very few exceptions, members of the media are well behaved during the World Series, and are not likely to treat the players like "pros." We will make every effort to ensure that no member of the media asks your child inappropriate questions.

For that reason, we insist that if any member of the media wishes to interview a player, one or more of the following people must be present throughout the entire interview:

1. A member of the Little League Communications Staff;
2. The player's manager or coach; or,
3. The player's parent.

After each game, a member of the Little League International Communications Staff will escort the managers from both teams and one or more players from the winning team to the Media Center Interview Room underneath Lamade Stadium. The players are usually those whose performances in the game led to a request from the media for an interview. The balance of the teams will be escorted to International Grove for changing out of uniforms, showers, etc. Players from the losing team will not be permitted in the Interview Room.



Only the manager, coach, and players being interviewed will be permitted in the Media Area, where questions will be asked by the media in a news-conference atmosphere in a virtual setting. A member of the Little League Communications Staff will monitor the news conference. No one-on-one interviews with the players are permitted until one hour after the game is complete. If a player consistently performs well, media attention on that player will increase. If a player's parent is well-known, media attention on the player will also be evident.

In any event, please, let your child know, as we will, that he or she is under no obligation whatsoever to speak to the media if they do not wish to. Should an interview be granted, we encourage all players, managers, and coaches to be open and honest with their answers, keeping in mind the principles of sportsmanship mentioned earlier. You, as a relative of a Little League Baseball World Series participant, also are welcome to speak to the media at any time. If you are contacted by a member of the media for an interview, especially if it is a major

outlet, please contact the Little League International Communications Staff for assistance at [wsmmedia@LittleLeague.org](mailto:wsmmedia@LittleLeague.org).

Regardless of past relationships with the team, all media will have the same basic levels of access, including your local hometown media. This means, generally, very limited media personnel will be permitted inside the International Grove, and only under direct observation from Little League International Staff. If you know of any member of the media who has violated any of these policies, please bring it to the attention of a Team Host.

For any in-person interview with a player, the media member must remain at least six feet away from any interview subject (player, coach, etc.) and the media member must also wear a mask. While appearing on camera, the interview subject may wear a mask at their comfort. During any off-camera interviews, all participants should be masked. In-person interviews should be no longer than 15 minutes at a time.



## TELEVISION:

All of the games will be televised on the ESPN family of networks or ABC. Visit [LittleLeague.org/WSSchedule](https://www.littleleague.org/WSSchedule) and local TV listings for more information.

**IMPORTANT NOTE: LITTLE LEAGUE IS NOT ABLE TO PROVIDE COPIES OF THE BROADCAST TO PLAYERS, PARENTS, FANS, ETC., DURING OR AFTER THE SERIES. IF YOU WISH TO HAVE A COPY OF A GAME FOR PERSONAL USE, WE RECOMMEND USING A DVR DEVICE, OR OTHER RECORDING DEVICE, TO RECORD THE GAMES FROM HOME. FEATURES, HIGHLIGHTS, AND GAME RECAPS WILL BE POSTED ON LITTLELEAGUE.ORG/VIDEOS.**

## RADIO:

The local iHeartMedia station in Williamsport (WRAK-AM 1400/95.5/102.7) will broadcast all of the World Series Games. iHeartMedia has English-language radio broadcast rights to the games. If any English-speaking radio stations are interested in taking the radio "feed" from iHeartMedia, please have them call 570-327-1400 for details.

## GAME STATISTICS AND RECAPS:

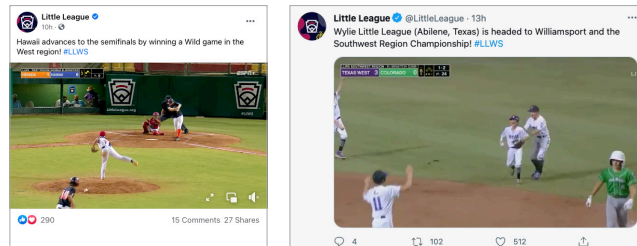
Game details, including box scores and statistics are available through GameChanger for free. More information, including how to follow, is available on [LittleLeague.org](https://www.littleleague.org).

## NEWSPAPERS:

*The Williamsport Sun-Gazette*, in addition to other local and/or national newspapers, may carry daily results and/or photographs of the Little League Baseball World Series games and events.

## SOCIAL:

Little League's social media accounts will actively cover the World Series and post official updates. Follow and join the action at [#LLWS](https://twitter.com/LLWS).



- [Facebook.com/LittleLeague](https://www.facebook.com/LittleLeague)
- [Twitter.com/LittleLeague](https://twitter.com/LittleLeague)
- [Instagram.com/LittleLeague](https://www.instagram.com/LittleLeague)
- [YouTube.com/LittleLeague](https://www.youtube.com/LittleLeague)

If your player should share a photo/video with you from inside the Grove, please note that this is prohibited during the tournament. We ask you to please not share those photos/videos in any manner (e.g. email, text, social, etc.). Should you or any of your family members have complaints or questions, please see a member of the Little League International Staff. We kindly ask that you not use social media for those questions or complaints. Please be mindful of people asking to friend or follow you on social media, your players, or any other account connected to you or your team. Only accept friend/follow requests from individuals you know.

**IMPORTANT NOTE: The use of video recording technology, including cell phones, to capture, stream, or distribute Little League Region or World Series game footage in any medium is strictly prohibited and considered copyright infringement, punishable to the fullest extent under applicable federal and state laws.**

## TRADEMARK AND LOGO USE:

Little League Baseball, Incorporated, more commonly referred to as "Little League," is a federally-chartered corporation to which Congress has granted the exclusive right and owner of the following trademarks, service marks and other designations: **LITTLE LEAGUE, LITTLE LEAGUER, LITTLE LEAGUE BASEBALL, SENIOR LEAGUE LITTLE LEAGUE BASEBALL, LITTLE LEAGUE SOFTBALL, LITTLE LEAGUE CHALLENGER DIVISION, LL, LLB**, and the Little League Emblems or logos (e.g. keystone patch, Character, Courage and Loyalty logo), among others. Use of these trademarks in anyway, including fundraising efforts or media coverage, must be approved by Little League International. For questions, please contact [marketing@LittleLeague.org](mailto:marketing@LittleLeague.org).

## WHILE YOU ARE HERE

**1. Stadium Seating:** Family members of players, managers, and coaches will be provided a limited number of "Team Pass" special seating/souvenir ID passes for their team's games in an area near the dugouts. Each team receives the same number of passes. There is never any admission charged for any Little League Baseball World Series game.

**2. Entry to the Complex:** Similar to the Region Tournaments, attendance will be limited to friend and families of the teams. Each team will receive 250 Team Passes for admittance onto the complex and stadium access for their team's games. Managers will be responsible for distributing the passes. There will be only one public entrance to the complex. Team Passes will be verified at Gate 5 and must then be presented again at the security checkpoint at Gate 3. Shuttles will be available for those who need assistance. At the security checkpoint at Gate 3, there will be three options for proceeding through our metal detectors and being screened by our security personnel: **No Bag Lane (fastest option):** Individuals with no bags or a small purse or bag that does not exceed 6.5 inches x 4.5 inches. **Clear Bag Lane:** Individuals with clear totes in the material of plastic, vinyl, or PVC (may not exceed 12 inches x 6 inches x 12- inches), in addition to any small purses or bags (may not exceed 6.5 inches x 4.5 inches). **Bag Entrance (please allow additional time for screening):** Individuals with other small bags, purses, diaper bags, etc. Large bags and containers (larger than 17 inches x 7 inches x 13 inches) are not permitted.

**3. COVID-19 Mitigation Efforts for Spectators:** As we continue to navigate the COVID-19 pandemic, and in the interest in the safety of our players, volunteers, families, and visitors, all spectators to our tournaments are kindly asked: **DO NOT ENTER** if you feel sick, have a fever, or in the past 14 days have had any symptoms of COVID-19 or exposure to someone with COVID-19. Unvaccinated visitors are strongly encouraged to wear masks during your visit. Vaccinated visitors may wear masks at your comfort. Practice physical distancing: it is recommended to keep a minimum of 6 feet from all teams and other visitors. Wash and/or sanitize your hands frequently and thoroughly. Do not crowd in lines, at common areas, or at points of interest. Follow all other signage, announcements, and other instructions.

**4. Weather:** August can be quite warm in Pennsylvania in the daytime. It is a good idea to dress accordingly, and bring sunscreen (\*No aerosol containers). At night and in the early morning, however, it can become a bit chilly. It is not unusual to wake up to temperatures in the 50s (F).

**5. Concessions:** A limited selection of food and drinks is available at the concession facility between the stadiums, on the concourse. Of course, these items are at "Little League" prices.



- 6. Pavilion:** Feel free to enjoy your meal in the Jonathan Levin Memorial Pavilion, located in the concourse. We only ask that you keep this area clean for the next family. (Note: The pavilion is not to be used for pin trading.) See complex map for location.
- 7. Banking:** Multiple ATMs can be found on the concourse for your convenience.
- 8. Photos/Videos:** Parents and fans may take photos of the games, but these must be for personal use only, and the photographer must not impair the view of any spectator, and must **not** use photo areas specifically for credentialed news photographers and television camera operators. Team photos and individual headshots will be available for a free download at the conclusion of the tournament, and additional game action photos will be available for purchase. These photos are for personal use only and may not be shared with any third party. Photo galleries will also be posted on LittleLeague.org throughout the World Series.
- 9. Charging Areas:** A limited number of USB outlets are available in the Pavilion where fans can charge their devices using their own USB charging cable. Charging cords are available for purchase at the Stadium Gift Shop.
- 10. World of Little League® Museum:** Please note that during this year's World Series, the World of Little League Museum will remain closed to the general public. All teams will have an opportunity for a private tour.
- 11. Souvenirs:** The Stadium Gift Shop is located near the first-base side of Lamade Stadium where you can purchase Little League souvenirs of all types, including shirts, caps, pins, and more. Please note that this year, there will not be a souvenir program for purchase.

**Gift Shop Hours:** (\*\*Hours subject to change):

Thu/Thursday, 8/19:	11:00 a.m. – 9:00 p.m.	Wednesday, 8/25:	1:00 p.m. – 9:30 p.m.
Friday, 8/20:	11:00 a.m. – 9:00 p.m.	Thursday, 8/26:	1:00 p.m. – 9:00 p.m.
Saturday, 8/21:	11:00 a.m. – 10:00 p.m.	Friday, 8/27:	CLOSED.
Sunday, 8/22:	7:00 a.m. – 4:00 p.m.	Saturday, 8/28:	10:30 a.m. – 5:30 p.m.
Monday, 8/23:	11:00 a.m. – 9:00 p.m.	Sunday, 8/29:	8:00 a.m. – 5:00 p.m.
Tuesday, 8/24:	10:00 a.m. – 9:30 p.m.		

**THINGS TO DO AND SEE:**

Many areas of Williamsport and the surrounding communities are well-known for hospitality and beautiful settings. The Williamsport/Lycoming Chamber of Commerce has a Visitor Bureau Information Booth located next to Volunteer Stadium. It will have information about things to see and do in our local area. The main visitor information center is located at 102 W. Fourth Street, Williamsport, PA 17701. Before you visit this area in person, you might want to visit **VacationPA.com**

Here are some sites around town and nearby you might want to check out: Historic Bowman Field; Original League Field; Millionaires Row; Hiawatha Paddlewheeler; Lycoming Mall (with movie theatres); Cinema Center in downtown Williamsport; Herdic Trolley; Lycoming County Historical Museum; Lewisburg Children's Museum; Clyde Peeling's Reptiland, and more. You can get information on many of these places in the Visitors Guide. Also, some of the family theme park attractions located within two to three hours driving time are Hershey Park, Knoebel's Amusement Resort, and Dorney Park.

**SHOPPING:**

Scores of gift shops, fine jewelers, antique dealers, clothing stores and more can be found in and around Williamsport/Lycoming County. Check out the Lycoming Visitors Guide for more information.

**PUBLIC TRANSPORTATION:**

Local City Bus Schedules are available at motels/hotels and business places, including malls. Special rates during the Little League Baseball World Series may apply. River Valley Transit, (1500 W 3rd St.), 570-326-2500; Billtown Cab. Co., 570-322-2222; Susquehanna Trailways, (56 East Third St.), 570-326-1511. Rideshare Apps (Uber, Lyft) are also available in the area.

**WILLIAMSPORT WELCOMES THE WORLD:**

On Saturday, August 21, 2021, at 5 p.m., the City of Williamsport will host Williamsport Welcomes the World. Williamsport Welcomes the World is the annual celebration to welcome the teams, families, and visitors to downtown Williamsport during the Little League World Series. There will be activities along with various food and merchandise vendors. It's definitely a fun event for everyone.

**MLB LITTLE LEAGUE® CLASSIC:**



We are excited to welcome Major League Baseball, as well as the Cleveland Indians and Los Angeles Angels to Williamsport this year for the MLB Little League Classic, which will be played at 7 p.m. at Historic Bowman Field on Sunday, August 22. Bowman field is just across the river from the Little League International Complex. All participants in the Little League Baseball World Series will receive tickets to the game, and Little League International will have more information about the distribution of tickets for families. Additional tickets will not be available to the public. In addition to the game, players from the Indians and the Angels will be visiting the Little League Baseball World Series earlier in the day to meet with World Series players and experience the Little League Baseball World Series.

**GRAND SLAM PARADE AND OPENING CEREMONIES:**

Unfortunately, the Grand Slam Parade, that typically takes place on the day before games begin, has been canceled for this year. Opening Ceremonies have also been canceled for this year.

**LOCAL HOSPITALS**

(FOR EMERGENCIES, DIAL 911)

**UPMC North Central Pa. – Williamsport**

700 High St., Williamsport  
570-321-1000

**UPMC North Central Pa. – Divine Providence**

1100 Grampian Blvd., Williamsport  
570-326-8181

**UPMC North Central Pa. – Muncy**

215 E. Water St., Muncy  
570-327-8137.

**Geisinger Jersey Shore Hospital**

1020 Thompson St., Jersey Shore  
570-398-0100

**Evangelical Community Hospital**

One Hospital Drive, Lewisburg  
570-522-2000.

# 2021 LITTLE LEAGUE BASEBALL® WORLD SERIES

WILLIAMSPORT, PENNSYLVANIA | AUGUST 19-29

## HANK AARON CHAMPIONSHIP

## TOM SEEVER CHAMPIONSHIP

WINNER'S BRACKET

ELIMINATION BRACKET

WINNER'S BRACKET

ELIMINATION BRACKET

BRACKET COURTESY OF



We Make It Happen.



**GAME 1** SCORE

WEST A	
NEW ENGLAND B	

Thursday 8/19 @ 1PM - ESPN

**GAME 3** SCORE

MIDWEST A	
MID-ATLANTIC B	

Thursday 8/19 @ 5PM - ESPN

**GAME 6** SCORE

GREAT LAKES A	
SOUTHEAST B	

Friday 8/20 @ 3PM - ESPN

**GAME 8** SCORE

NORTHWEST A	
SOUTHWEST B	

Friday 8/20 @ 7PM - ESPN

**GAME 14** SCORE

W1	
W3	

Sunday 8/22 @ 11AM - ESPN

**GAME 15** SCORE

W6	
W8	

Sunday 8/22 @ 1PM - ESPN

**GAME 17** SCORE

L15	
W10	

Monday 8/23 @ 1PM - ESPN

**GAME 10** SCORE

L1	
L3	

Saturday 8/21 @ 3PM - ABC

**GAME 11** SCORE

L6	
L8	

Saturday 8/21 @ 6PM - ESPN

**GAME 22** SCORE

W17	
W20	

Tuesday 8/24 @ 7:30PM - ESPN

**GAME 20** SCORE

W11	
L14	

Monday 8/23 @ 7PM - ESPN2

**GAME 24** SCORE

W14	
W15	

Wednesday 8/25 @ 7:30PM - ESPN

**GAME 28**  
HANK AARON CHAMPIONSHIP

W24	
W25	

Saturday 8/28 @ 3:30PM - ABC

**GAME 25** SCORE

L24	
W22	

Thursday 8/26 @ 3PM - ESPN

**GAME 30**  
LLBWS CHAMPIONSHIP

W28	
W27	

Sunday 8/29 @ 3PM - ABC

LLBWS CHAMPIONS

W30	
-----	--

**GAME 29**  
CONSOLATION GAME

L28	
L27	

Sunday 8/29 @ 10AM - ESPN

T Mobile  
LITTLE LEAGUE  
**HOME RUN DERBY**  
2021  
Tuesday 8/24 @ 11AM  
Volunteer Stadium

**GAME 23** SCORE

W13	
W16	

Wednesday 8/25 @ 3PM - ESPN

**GAME 27**  
TOM SEEVER CHAMPIONSHIP

W23	
W26	

Saturday 8/28 @ 12:30PM - ABC

**GAME 26** SCORE

L23	
W21	

Thursday 8/26 @ 7PM - ESPN

**GAME 13** SCORE

W2	
W4	

Sunday 8/22 @ 9AM - ESPN

**GAME 16** SCORE

W5	
W7	

Sunday 8/22 @ 2PM - ABC

**GAME 18** SCORE

L16	
W9	

Monday 8/23 @ 3PM - ESPN

**GAME 21** SCORE

W18	
W19	

Tuesday 8/24 @ 3PM - ESPN

**GAME 19** SCORE

W12	
L13	

Monday 8/23 @ 5PM - ESPN2

**GAME 2** SCORE

SOUTHEAST A	
GREAT LAKES B	

Thursday 8/19 @ 3PM - ESPN

**GAME 4** SCORE

NEW ENGLAND A	
WEST B	

Thursday 8/19 @ 7PM - ESPN2

**GAME 5** SCORE

MID-ATLANTIC A	
NORTHWEST B	

Friday 8/20 @ 1PM - ESPN

**GAME 7** SCORE

SOUTHWEST A	
MIDWEST B	

Friday 8/20 @ 5PM - ESPN

**GAME 9** SCORE

L2	
L4	

Saturday 8/21 @ 1PM - ESPN

**GAME 12** SCORE

L5	
L7	

Saturday 8/21 @ 8PM - ESPN2

### HANK AARON CHAMPIONSHIP TEAMS



### TOM SEEVER CHAMPIONSHIP TEAMS



\*\*\* All Little League Baseball® World Series games will be televised on ESPN, ESPN2, or abc. All games held at Howard J. Lamade or Volunteer Stadium. Little League International - South Williamsport, Pennsylvania - Schedule subject to change. \*\*\*



# Little League

539 U.S. Route 15 Hwy | Williamsport, PA 17701  
LittleLeague.org | #LLWS