



APPEARANCE OF LITTLE LEAGUERS® IN THE MEDIA



Any use of the Little League trademarks (including the words “Little League,” “Little Leaguer,” “Little League Baseball,” and other variations, logos, marks, and phrases) must be approved in writing by Little League International. Children identified as Little Leaguers, either verbally or by inference, **MUST NOT** appear on television (except for news programs), in videos (other than home videos for personal use, and not to be sold), in motion pictures, or in any advertisement whatsoever, without the expressed written consent of Little League International.

On the following pages are specific examples of how various Little Leaguers should appear in all cases in which approval has been given. Images of Little Leaguers must not be released or published until final written approval is provided by Little League International.

**For further information, contact the Media Relations Department
at Little League® International
570-326-1921; media@LittleLeague.org**

GUIDELINES FOR ALL FORMS OF MEDIA (See Page 4 for information on the various Little League divisions.)

- EVERY PLAYER AND UMPIRE depicted during ANY game **MUST** be wearing a Little League Shoulder Patch on the upper left sleeve of the uniform blouse.
- No games or practice should be held when weather or field conditions are not good, particularly when lighting is inadequate.
- Play area should be inspected frequently for holes, damage, glass and other foreign objects.
- Dugouts and bat racks must be positioned behind screens.
- Only players, managers, coaches and umpires are permitted on the playing field during play and practice sessions.
- Responsibility for keeping bats and loose equipment off the field of play should be that of a regular player assigned for this purpose.
- Procedure should be established for retrieving foul balls batted out of the playing area.
- During practice sessions and games, all players should be alert and watching the batter on each pitch.
- During warm-up drills, players should be spaced so that nobody is endangered by errant balls.
- Equipment should be inspected regularly. Make sure it fits properly.
- Pitching machines, if used, must be in good working order (including extension cords, outlets, etc.) and must be operated only by adult managers and coaches.
- Batters and base runners must wear protective NOCSAE-approved helmets during practice, as well as during games.
- Catchers must wear catcher's helmet (with face mask and dangling throat protector), chest protector and shin guards. Male catchers must wear long-model chest protector (in the major division and below), protective supporter and cup at all times. **Skull caps are not permitted.**
- Except when the runner is returning to a base, head first slides are not permitted (Major division and below).
- During sliding practice, bases should not be tied or strapped down.
- At no time should “horse play” be permitted on the playing field.
- Managers/coaches **MUST NOT** warm up (or play catch with) any players before or during games.
- Players who wear glasses should be encouraged to use “Safety Glasses.”
- Players must not wear watches, rings, pins, jewelry or other metallic items, unless permitted by Rule 1.11 (j).
- Batting/catcher's helmets must not be painted unless applied or approved by the manufacturer.
- Regulations prohibit on-deck batters in Little League division and below. This means no player should handle a bat, even while in an enclosure, until it is his/her time at bat.
- Shoes with metal spikes must **NOT** be worn by any player in Little League Baseball and Softball major division or younger, nor by any manager, coach or umpire.
- **EQUIPMENT DEPICTED MUST MEET LITTLE LEAGUE MINIMUM STANDARDS FOR THE DIVISION.**

CATCHERS

Little League Baseball division or younger, and Boys Little League Softball division or younger: In all cases, any player depicted as a catcher, whether in a game or a practice, **MUST** be wearing a full catcher's helmet that covers both ears, a catcher's mask WITH a dangling throat protector (even if the mask includes a wire extension), a chest protector with the groin extension, shin guards, and a catcher's mitt.

Junior League Baseball division or older, Boys Senior League Softball (Boys Junior Softball is not a division offered) and older, and all Girls Softball divisions, the standards are the same as above, except that the chest protector need not include the groin extension. (Fielder's mitt acceptable in softball.)

Note 1: Both photos below show typical catcher's equipment. Both the traditional style mask and helmet (Photo 1) and the "hockey" style (Photo 2) are acceptable, provided they are NOCSAE approved.

Note 2: Both players' uniforms below include the proper wear of the Little League Shoulder Patch, which **MUST** be worn on the left sleeve of the uniform.

Note 3: The player's name (first or last) must **NOT** appear on the uniform.

Note 4: Helmets must **NOT** include any words, letters, logos, etc., unless applied or approved by the manufacturer.

EQUIPMENT DEPICTED MUST MEET LITTLE LEAGUE MINIMUM STANDARDS FOR THE DIVISION.



Photo 1

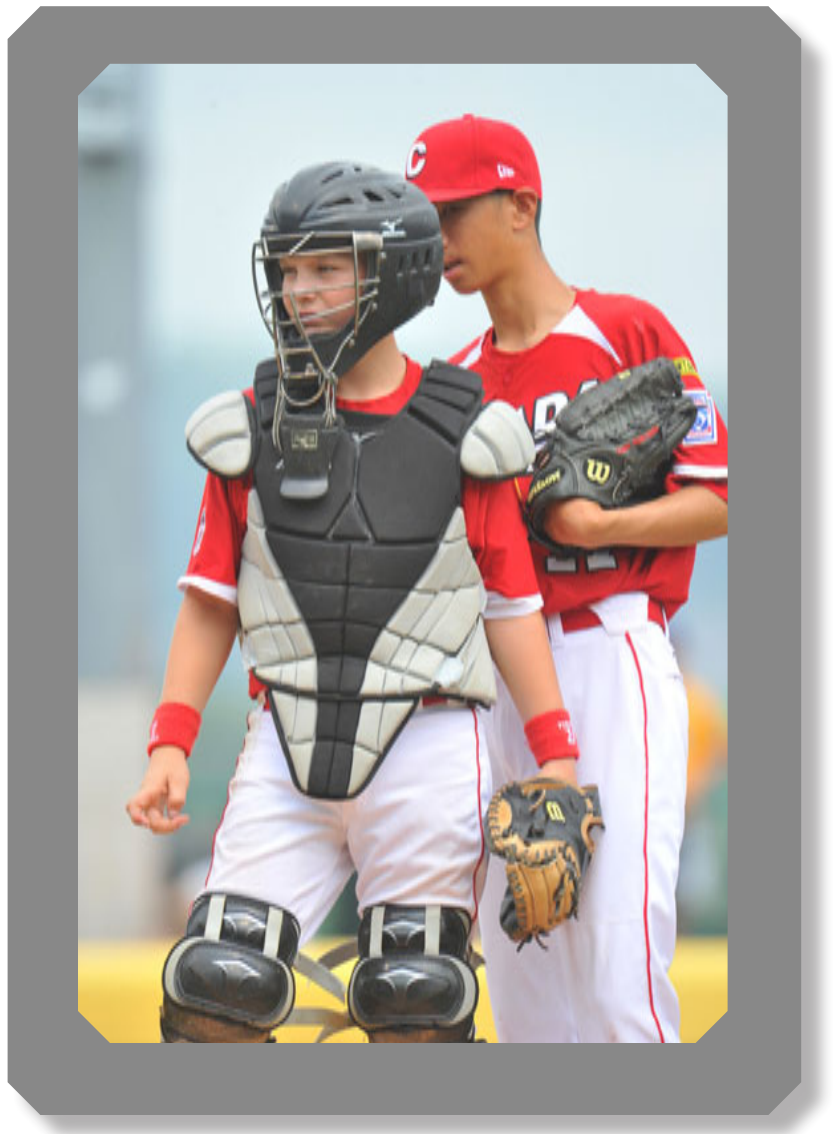


Photo 2

BATTERS, BASE RUNNERS AND BASE COACHES

Batters: In all cases, any player holding a bat at any time, whether in a game or a practice, **MUST** be wearing a batting helmet that covers **BOTH** ears.

Base Runners: In all cases, any player depicted as a base runner at any time, whether in a game or a practice, **MUST** be wearing a batting helmet that covers **BOTH** ears.

Base Coaches: In all cases, any player depicted as a base coach at any time, whether in a game or a practice, **MUST** be wearing a batting helmet that covers **BOTH** ears. Adult base coaches are not required to wear a helmet. *In all divisions: if only one adult manager or coach is available, both base coaches must be players. An adult must be in the dugout at all times.*

Note 1: Both photos to the right show typical batting helmets. A face mask or face shield is not required, but is acceptable.

Note 2: Helmets **MUST** be NOCSAE approved (noted on helmet).

Note 3: Both players' uniforms include the proper wear of the Little League Shoulder Patch, which **MUST** be worn on the left sleeve of the uniform.

Note 4: The player's name (first or last) must **NOT** appear on the uniform.

Note 5: Helmets must **NOT** include any words, letters, logos, etc., unless applied or approved by the manufacturer.

EQUIPMENT DEPICTED MUST MEET LITTLE LEAGUE MINIMUM STANDARDS FOR THE DIVISION.



UMPIRES

Plate Umpire: In all cases, the plate umpire should be depicted wearing gray slacks and, preferably, a blue shirt. The umpire may wear a protective mask with “dangling” throat protector. He/she must wear a chest protector (either inside or outside the shirt, but preferably inside), and must wear shin guards (either inside or outside the slacks – preferably inside). The Little League Umpire Shoulder Patch must be affixed to the left sleeve. He/she should wear a “ball bag” attached by a black belt, and should wear black shoes – preferably shoes with reinforced toes. He/she should also have a plate brush and ball/strike/out indicator. He/she should wear a dark blue “combo” umpire’s cap or plate umpire’s cap.

Base Umpires: The base umpires’ dress is the same as the plate umpire’s, except that no protective equipment is used, plain black athletic shoes are preferred, and he/she should wear a dark blue cap.



FACILITIES

Dugouts, Player Seating Areas: In all cases, the dugout or player seating areas **MUST** be protected from the field of play by a screen or fence, as shown below in the example.

On-Deck Batters – Little League divisions and younger: In all cases, there is **NO** on-deck batter in these divisions. This means that the next batter due to bat **MUST NOT** handle a bat until it is his/her turn to advance to the batter's box. There is no on-deck area anywhere.

On-Deck Batters – Junior League divisions and older: In all cases, the on-deck batter position is permitted. However, it is preferred that the on-deck batter be behind a screen or fence while warming up. Also, no other players must be in close proximity to the on-deck batter, and the on-deck batter must be wearing a proper batting helmet.

There must be no loose equipment lying on the field in fair or foul territory in games or practices.



Divisions of Play - Baseball

Tee Ball: 4-7 year olds; **Minor League:** 6-12 year olds; **Little League (sometimes known as “Major Division”):** *9-12 year olds; **Junior League:** 12-14 year olds; **Senior League:** 13-16 year olds; **Big League:** 15-18 year olds

Divisions of Play – Girls Softball

Tee Ball: 4-7 year olds; **Minor League:** 6-12 year olds; **Little League (sometimes known as “Major Division”):** *9-12 year olds; **Junior League:** 12-14 year olds; **Senior League:** 13-16 year olds; **Big League:** 14-18-year-olds

Divisions of Play -Boys Softball

Tee Ball: 4-7 year olds; **Minor League:** 6-12 year olds; **Little League (sometimes known as “Major Division”):** *9-12 year olds; **Senior League:** 13-16 year olds; **Big League:** 14-18 year olds.

**9-11 year olds may play Minors or Little League*